



FEPP Levy

School Based Request for Investment Technical Assistance Session 3

Department of Education and Early Learning (DEEL)

October 21, 2019



Welcome!

- ☐ Introductions
- ☐ Check-in
- ☐ Access



WiFi Access

Network: *Seattleguest*

Password: *none*

www.tinyurl.com/DEELK12RFI



FAMILIES
EDUCATION
PRESCHOOL
& PROMISE



Objectives

Participants will:

- Explore and understand the expectations of the workplan and budget
- Document strategies related to the levy outcomes
- brainstorm elements of an effective rationale for success
- understand spending guidelines and expectations of the 2-teired budget

In order to develop:

- a preliminary draft of their school's workplan and budget

And will know they are successful when they have:

- completed at least one row in each tab in the workplan template (Excel doc)



Guiding questions

Given what we know about our context, data, and focus student needs, what supplemental strategies will most effectively make progress toward levy outcomes?

What makes for a effective rationale for success?

How do we ensure our budget/spending plan connects to our workplan and levy outcomes?



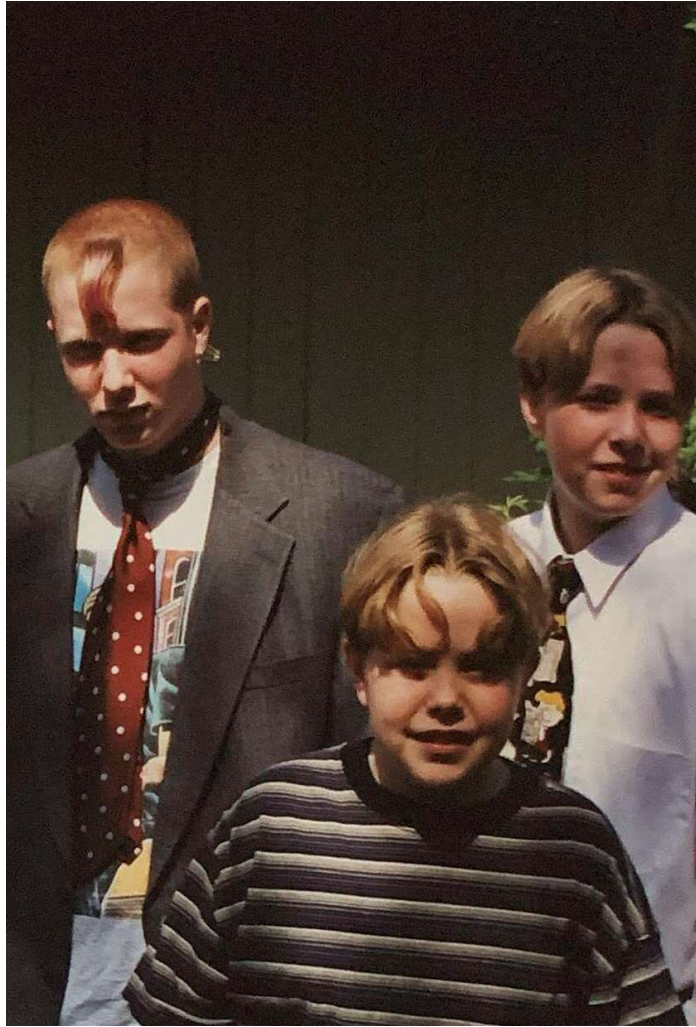
Agenda

- Review of Section 2 work
- Outcomes and Indicators in College and Career Readiness
- Strategy Brainstorm

~ *Break* ~

- Rationale for Success
- Spending Guidelines
- Budget implications of strategy
- Closing and next steps





Throwback...Monday?

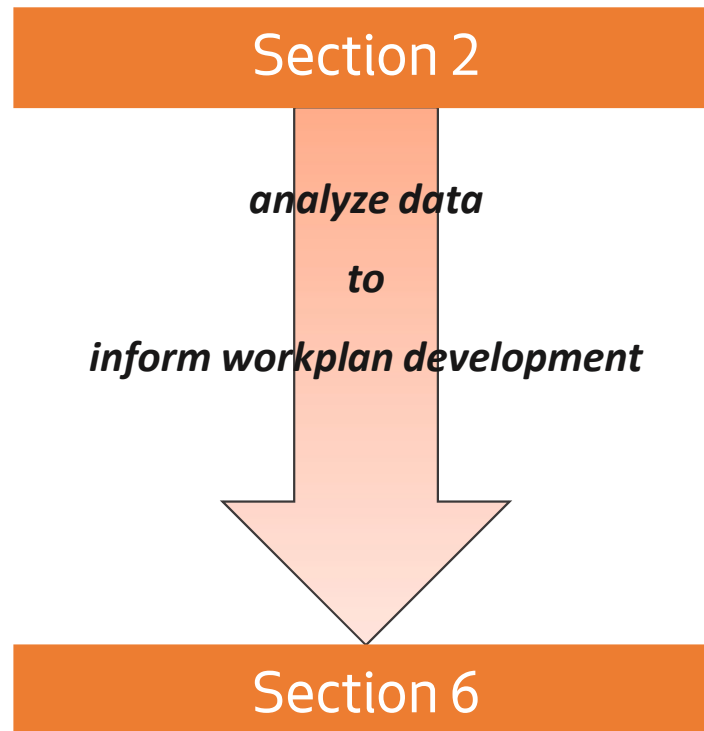
Section 2: Data Analysis

Two weeks ago you developed:

1. A preliminary data analysis identifying areas of need linked to Levy Outcomes and focus students
2. A map of your school's data systems
3. Ideas for your intended focus of Levy funds based on your data analysis



Section 2 forms the basis of your workplan



Homework Review

Assignment from the last TA session

- Read/Review instructions for Section 6 (*page 21*)
 - If you haven't already, download a copy of the Excel workplan template and bring it with you
- Read/Review Appendix C (*page 27*)
 - Begin to think about how these approaches/activities might appear in your workplan
- Take a look at the “Getting Started” resources



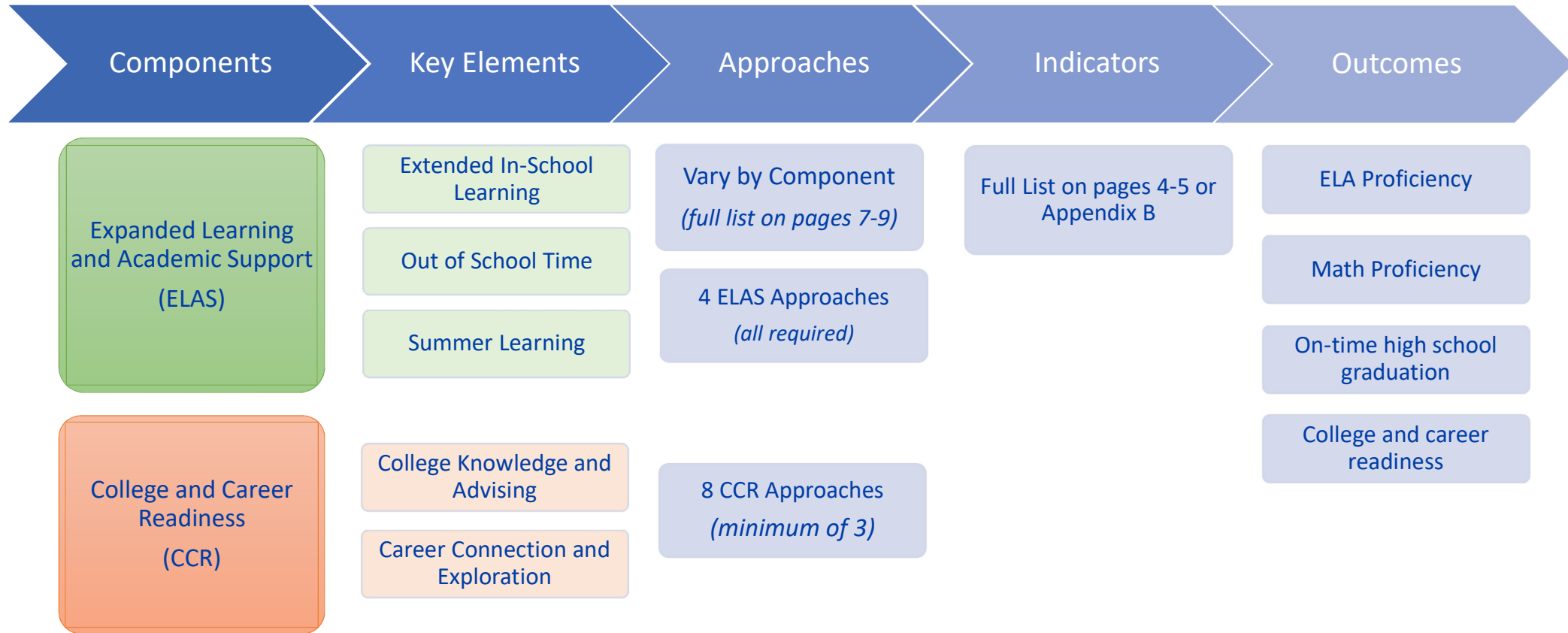
Review Section 6: Workplan *(p. 21-23)*

Workplans must outline a tiered approach to intervention services that is:

1. Based on student need
2. Tied to correlating outcomes and indicators, and
3. Reliant upon approaches that have demonstrated success in achieving outcomes.

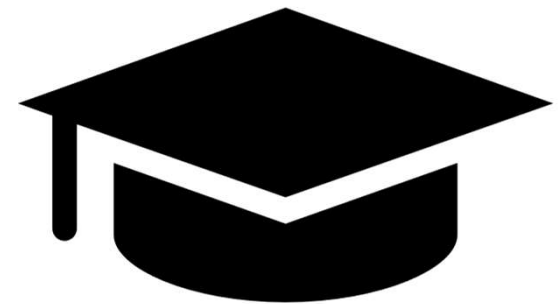
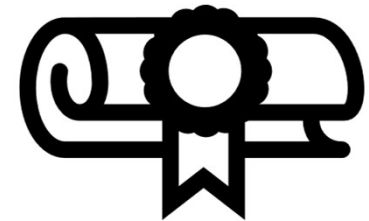


School-based Investment Framework



Outcomes to Indicators: A Focus on College and Career Readiness

- Using Appendix B, pick an indicator elevated in your analysis related to College and Career Readiness



College and Career Readiness in FEPP

“College and career readiness activities should be designed to prepare Seattle’s youth for success in careers to **live and thrive** in Seattle. Students at all grade levels should be exposed to 21st Century Skills, such as **creativity, critical thinking, communication, collaboration, perseverance, and inventiveness**. Activities will prepare Seattle’s youth, particularly historically underserved youth of color, for an **equitable and economically secure future.**”



Strategy brainstorm

Based on the indicator you selected:

- List strategies you're already thinking of
- Select **one or two** that you could start with for your workplan
- Think about leveraging existing initiatives or strategies

Once you have selected a strategy, record it in the Excel workplan template



**Fill in the rest of
the line**

Key Elements

Approaches

Outcome/Indicator

Strategy Title & Description

Focus students

Person(s) responsible



Break - 5 minutes



Rationale for Success: What makes for a convincing rationale?

Based on existing data from your context or available research

Cultural relevancy and responsiveness

Past experience

Evidence-based or promising practices

Directed toward Outcomes



Scoring Criteria Part A



Review scoring criteria for Section 6,
Part A



Which elements of the criteria does
the work you've done so far address?

Spending Guidelines

Funding remains outcomes based, however be mindful that spending plans:

- Supplement not Supplant
- Are linked to improving outcomes for focus students
- Adhere to district guidelines and CBAs where applicable

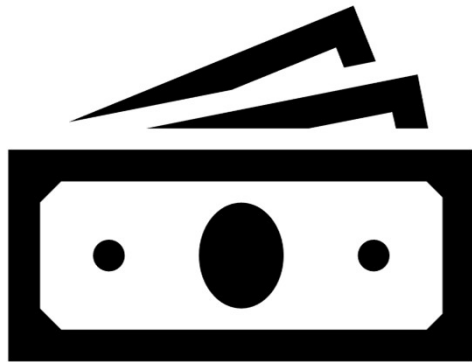


Spending guidelines

- Personnel:
 - FTE for Cert and Classified staff for services during school or in extended day
 - Extra time for professional development
 - Levy coordination (max 0.5 for teaching staff and 0.25 for admin)
- Non-personnel
 - Subcontracts with CBOs or other partners
 - Professional development
 - Supplies and materials
 - Transportation



Budget implications of proposed strategy



- Fill out corresponding line in budget for proposed strategy
- What might be different between tier 1 and 2 for this strategy?

Alignment



EXISTING INITIATIVES



OTHER COMPONENTS/KEY
ELEMENTS



VERTICAL ALIGNMENT WITHIN
OR ACROSS GRADE LEVELS



Reflect and Next Steps

Review

With your team, review what you have completed in the workplan

Identify

Action steps for completing the workplan

Plan

Email your team with a plan to follow up on this work



Upcoming Technical Assistance (TA)

Attendance at information and **TA sessions is not required** (nor are 'points' awarded for participation). However, it is highly recommended a school principal, designee, and/or key Levy team member(s) assigned to the development of a proposal should attend one information session at minimum, so applicants understand the RFI sections, technical compliance, and overview of application tools provided. For the most current information please visit the DEEL website (<https://www.seattle.gov/education>).

Session 4: Partnerships, Collaboration & Engagement & Cultural Responsiveness <i>Section 3, Section 4, Section 5</i>	Monday November 4, 2019	4:00-6:00 p.m. Miller Community Center 330 19th Ave E, Seattle, WA 98112
Session 5: General Technical Assistance	Monday November 18, 2019	4:00-6:00 p.m. Miller Community Center 330 19th Ave E, Seattle, WA 98112

Resources

Reference DEEL's website for a list of resources you might consider as you get started. Additional resources will be added as technical assistance sessions occur.



www.tinyurl.com/DEELK12RFI



Questions?

- Please submit questions to education@seattle.gov with the subject line "Question_School-Based RFI"
- Submitted questions will form the basis of our FAQ and the agendas of subsequent Technical Assistance sessions
- Please mark your calendars and plan to attend the upcoming Technical Assistance Sessions for in-depth support and dedicated 'work time'
- For updates and resources, please go to www.seattle.gov/education



Thank you!

